

**U.S. Army Corps of Engineers,  
New York District  
*-in partnership with the-  
New Jersey  
Department of Environmental Protection***

**Construction of the Loch Arbour to Deal, NJ  
Coastal Storm Risk Management**

**&**

**Beach Erosion Control Project**

**WHAT TO EXPECT**



## Mobilization

~Land-side Mobilization: It is estimated that this first phase of the project will begin on or around March 20, 2015 in Loch Arbour, NJ; the second phase of mobilization will occur in Deal, NJ after the beach construction in Loch Arbour, Allenhurst, and the southernmost section of Deal is complete. During mobilization activities you will see the contractor's vehicles delivering materials to the project area at the two designated beach access and staging areas throughout the duration of the project which is estimated to be complete by October 2015. These two areas have been established with support and cooperation from the local municipalities. Great measures will be taken to ensure the area is safe at all times and that the impact to the communities is as minimal as possible.

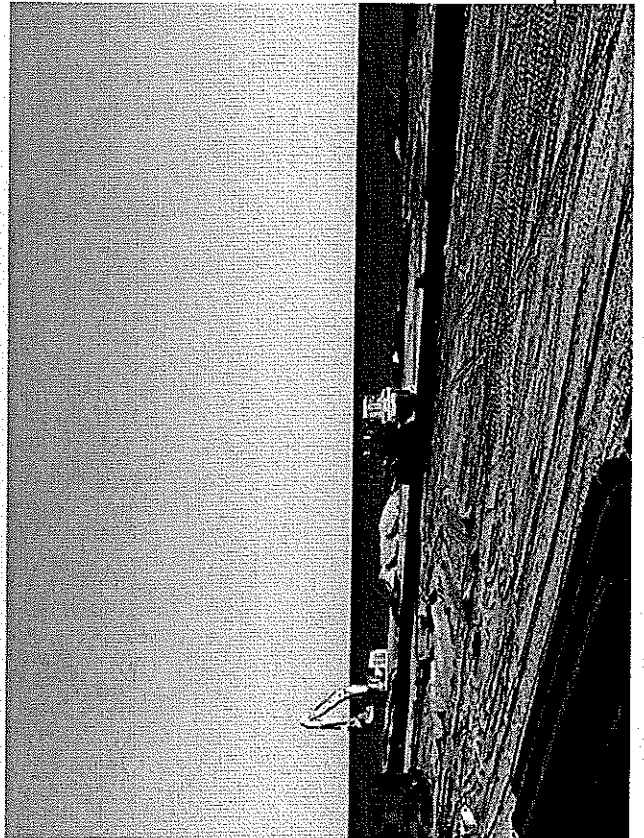
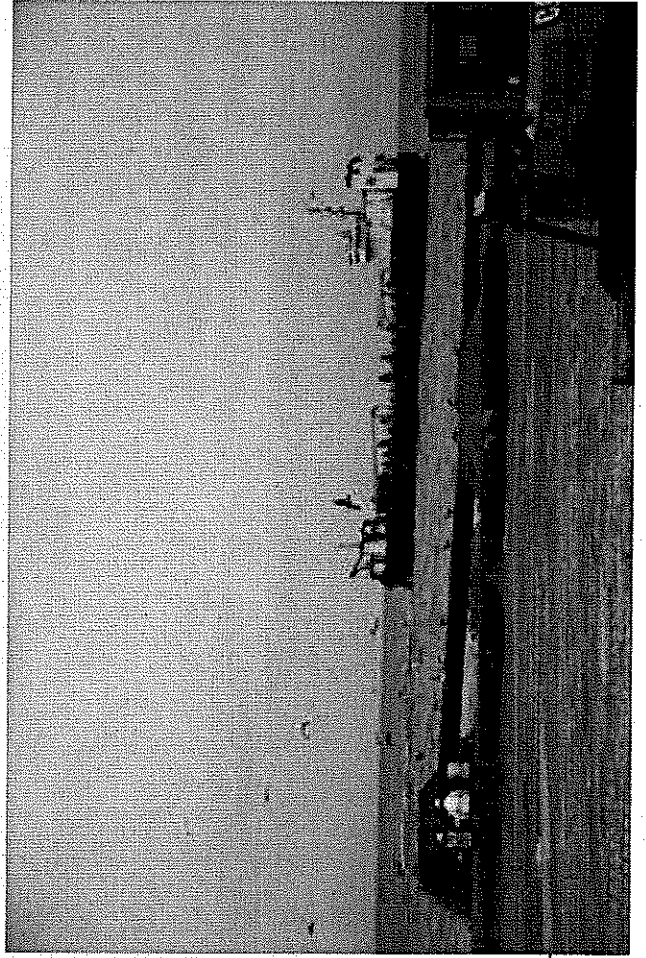
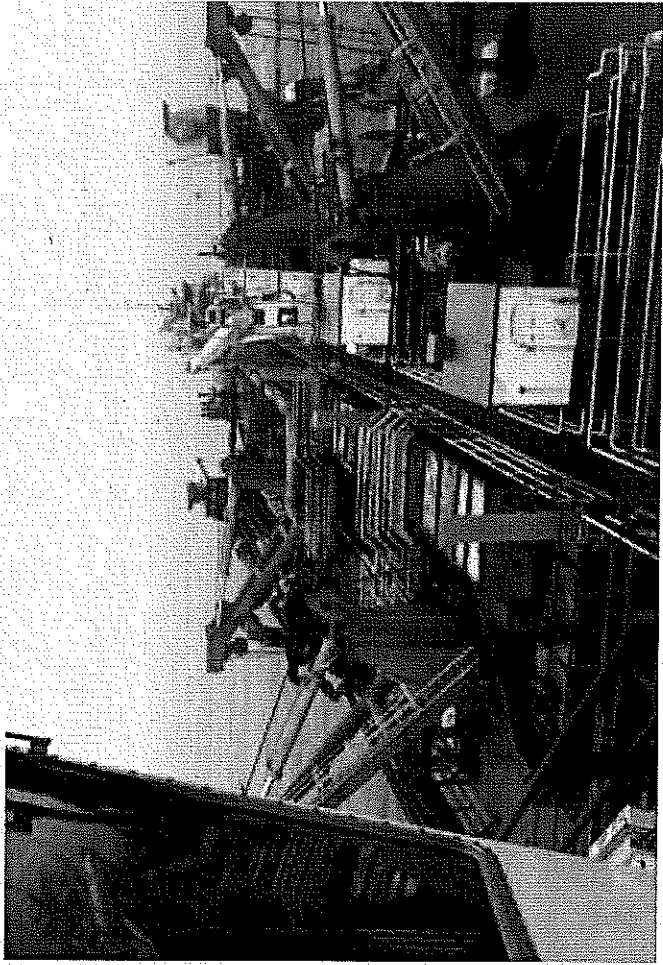
~Water-side Mobilization: In the weeks following the landside mobilization, the contractor will bring additional pipe to the beach from the water side. This pipe, called a submerged line, will eventually land on the beach and be connected to the shore pipe. It is through this system of pipes that the sand will be pumped from the dredge onto the beach. Before reaching the beach and being used to build the sand berm, the sand will be pumped through a set of baskets to catch any large debris and ensure that it is not placed on the beach.



## Beachfill

- ~ During this operation, when sand is pumped onto the beach, you will see equipment such as; bulldozers, excavators, loaders, and other miscellaneous equipment used to build the beach.
- ~ The contractor will secure the work area with orange safety fence. In the 1000ft areas that are actively being built, no access will be permitted. This 1000ft area will move northward every 7-10 days as the beach within the closed off area is built.





## Environmental Protection

- ~To ensure there is minimal impact to the environment, the U.S. Army Corps of Engineers has worked closely with the NJ Department of Environmental Protection which has issued a Water Quality Certificate, indicating that they have reviewed the overall operations to determine that they are consistent with the New Jersey Coastal Zone Management Program and comply with their regulations on water quality.
- ~The U.S. Army Corps of Engineers has coordinated directly with the U.S. Fish and Wildlife Service, and the National Marine Fisheries Service to develop procedures for the monitoring of threatened and endangered species to include herring, sea turtle, whales, sturgeon, piping plovers, least terns, Sea Beach Amaranth.
- ~Noise levels will be within industry standards. This is a 24- hour operation; activities will be continuous when the contractor is placing sand on the beach.



**Please contact your Municipal Officials if at any time you have questions or concerns.**

**The community and municipal support and assistance throughout these efforts has been and continues to be greatly appreciated. The State and Corps are committed to maintaining a successful partnership throughout (and beyond) the construction of this very important coastal storm risk management and beach erosion control project.**

